

June 19, 2010



Chuck Stafford- $1/800$ sec at $f / 5.0$ -ISO 200- 35 mm

June 19, 2010



Matt Korbelaak- $1/200$ sec at $f / 9.0$ -ISO 200- 130 mm

June 19, 2010



Chuck Stafford- $1/400$ sec at $f / 5.0$ -ISO 200- 35 mm

June 19, 2010



Don Dement- $1/400$ sec at $f / 8.0$ -ISO 200- 218 mm

June 19, 2010



Chuck Stafford- $\frac{1}{500}$ sec at $f / 5.0$ -ISO 200- 16 mm

June 19, 2010



Chuck Stafford- $\frac{1}{320}$ sec at $f / 5.0$ -ISO 200- 23 mm

June 19, 2010



Matt Korbela- $\frac{1}{200}$ sec at $f / 6.3$ -ISO 200- 200 mm

June 19, 2010



Matt Korbelak- $1/160$ sec at $f / 13$ -ISO 200- 46 mm

June 19, 2010



Chuck Stafford- $1/800$ sec at $f / 5.0$ -ISO 200- 173 mm

June 18, 2010



Melonie Collini- $\frac{1}{160}$ sec at $f / 8.0$ -ISO 100- 200 mm

June 19, 2010



Don Dement- $1/500$ sec at $f / 8.0$ -ISO 200- 270 mm

June 19, 2010



Matt Korbelak- $1/250$ sec at $f / 6.3$ -ISO 200- 200 mm

June 19, 2010



Sharon Stafford- $1/640$ sec at $f / 5.6$ -ISO 200- 79 mm

June 18, 2010



Melonie Collini- $\frac{1}{125}$ sec at $f / 8.0$ -ISO 180- 95 mm

June 19, 2010



Sharon Stafford- $1/400$ sec at $f / 5.6$ -ISO 200- 64 mm

June 19, 2010



Matt Korbelak- $1/100$ sec at $f / 13$ -ISO 200- 170 mm

June 19, 2010



Chuck Stafford- $\frac{1}{160}$ sec at $f / 4.5$ -ISO 400- 70 mm

June 19, 2010



Chuck Stafford- $\frac{1}{320}$ sec at $f / 4.5$ -ISO 400- 70 mm

June 19, 2010



Matt Korbelaak- $\frac{1}{100}$ sec at $f / 18$ -ISO 200- 50 mm

June 18, 2010



Melonie Collini- $\frac{1}{500}$ sec at $f / 5.6$ -ISO 200- 200 mm

June 18, 2010



Melonie Collini- $1/500$ sec at $f / 5.6$ -ISO 200- 200 mm

June 18, 2010



Melonie Collini- $\frac{1}{500}$ sec at $f / 5.6$ -ISO 400- 200 mm

June 18, 2010



Melonie Collini- $1/500$ sec at $f / 5.6$ -ISO 200- 200 mm

June 18, 2010



Melonie Collini- $\frac{1}{800}$ sec at $f / 5.6$ -ISO 200- 175 mm

June 19, 2010



Sharon Stafford- $1/1000$ sec at $f / 5.6$ -ISO 200- 56 mm

June 18, 2010



Melonie Collini- 1/250 sec at f / 8.0-ISO 100- 55 mm

June 18, 2010



Melonie Collini- $1/125$ sec at $f / 5.6$ -ISO 320- 185 mm

June 18, 2010



Melonie Collini- $\frac{1}{250}$ sec at $f / 8.0$ -ISO 100- 55 mm

June 19, 2010



Don Dement- $\frac{1}{500}$ sec at $f / 8.0$ -ISO 250- 270 mm

June 19, 2010



Don Dement- $1/800$ sec at $f / 8.0$ -ISO 200- 270 mm

June 19, 2010



Chuck Stafford- $\frac{1}{1000}$ sec at $f / 8.0$ -ISO 400- 200 mm

June 19, 2010



Don Dement- $\frac{1}{800}$ sec at $f / 8.0$ -ISO 200- 270 mm

June 19, 2010



Chuck Stafford- $1/1000$ sec at $f / 5.0$ -ISO 200- 35 mm

June 19, 2010



Don Dement- $1/640$ sec at $f / 8.0$ -ISO 200- 270 mm

June 19, 2010



Don Dement- $\frac{1}{200}$ sec at $f / 8.0$ -ISO 200- 30 mm

June 19, 2010



Matt Korbelak- $\frac{1}{100}$ sec at $f / 20$ -ISO 200- 200 mm

June 19, 2010



Sharon Stafford- $1/1000$ sec at $f / 5.6$ -ISO 200- 80 mm

June 19, 2010



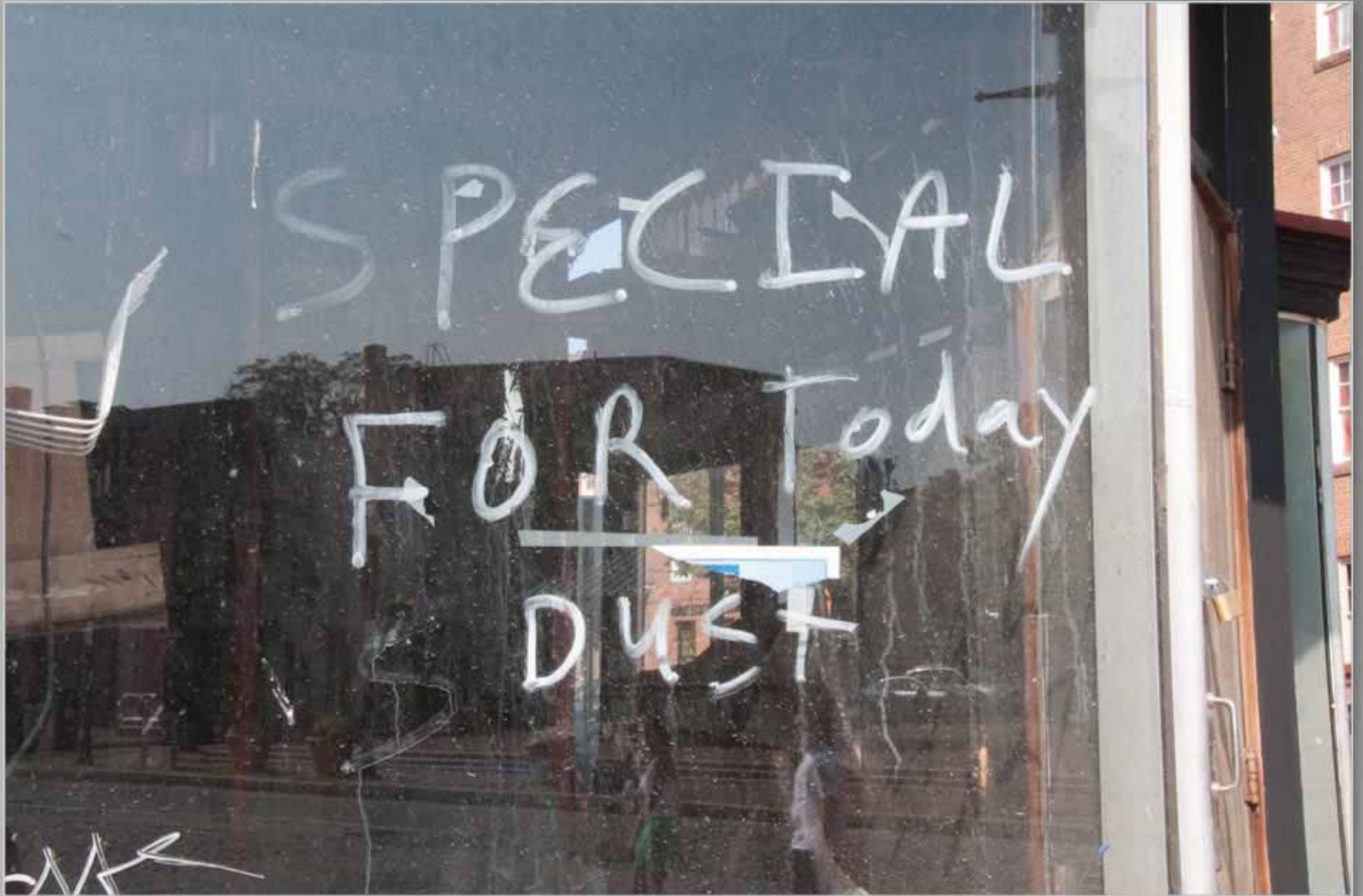
Don Dement- $\frac{1}{640}$ sec at $f / 8.0$ -ISO 200- 30 mm

June 19, 2010



Matt Korbelak- $1/100$ sec at $f / 20$ -ISO 200- 27 mm

June 19, 2010



Matt Korbelak- $1/50$ sec at $f / 20$ -ISO 200- 32 mm

June 19, 2010



Matt Korbelaak- $1/60$ sec at $f / 13$ -ISO 1600- 56 mm

June 19, 2010



Don Dement- $\frac{1}{60}$ sec at $f / 8.0$ -ISO 1000- 42 mm

June 19, 2010



Sharon Stafford- $\frac{1}{30}$ sec at $f / 5.6$ -ISO 200- 38 mm

June 19, 2010



Chuck Stafford- 1/25 sec at f / 4.0-ISO 200- 70 mm

June 19, 2010



Don Dement- $\frac{1}{40}$ sec at $f / 8.0$ -ISO 400- 39 mm

June 19, 2010



Matt Korbelak- $1/100$ sec at $f / 16$ -ISO 200- 95 mm

June 19, 2010



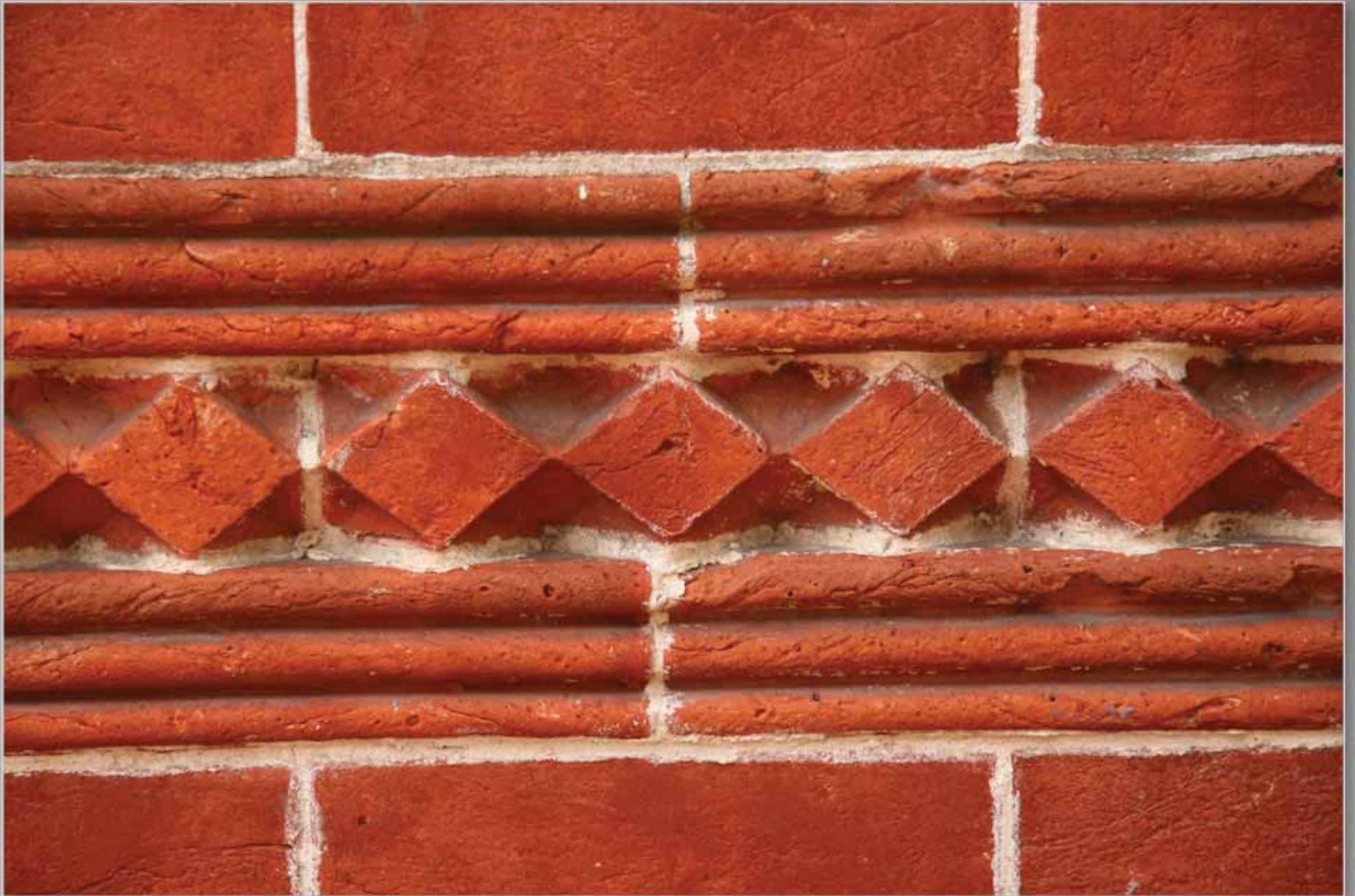
Don Dement- $\frac{1}{125}$ sec at $f / 8.0$ -ISO 800- 91 mm

June 18, 2010



Melonie Collini- $1/60$ sec at $f / 5.0$ -ISO 200- 55 mm

June 19, 2010



Sharon Stafford- $1/100$ sec at $f / 5.6$ -ISO 200- 85 mm

June 19, 2010



Sharon Stafford- $\frac{1}{80}$ sec at $f / 5.6$ -ISO 200- 44 mm

June 19, 2010



Chuck Stafford- $\frac{1}{1000}$ sec at $f / 4.0$ -ISO 400- 176 mm

June 19, 2010



Sharon Stafford- $1/160$ sec at $f / 5.6$ -ISO 200- 79 mm

June 18, 2010



Melonie Collini- $1/80$ sec at $f / 4.8$ -ISO 400- 100 mm

June 19, 2010



Don Dement- $1/250$ sec at $f / 8.0$ -ISO 200- 100 mm

June 19, 2010



Sharon Stafford- $1/640$ sec at $f / 5.6$ -ISO 200- 17 mm

June 19, 2010



Matt Korbelaak- $1/320$ sec at $f / 10$ -ISO 200- 22 mm

June 18, 2010



Melonie Collini- $1/125$ sec at $f / 5.6$ -ISO 200- 200 mm

June 19, 2010



Sharon Stafford- $1/400$ sec at $f / 5.6$ -ISO 200- 85 mm

June 19, 2010



Chuck Stafford- $\frac{1}{1250}$ sec at $f / 4.5$ -ISO 400- 200 mm

June 19, 2010



Matt Korbela - $1/100$ sec at $f / 16$ - ISO 200 - 150 mm

June 19, 2010



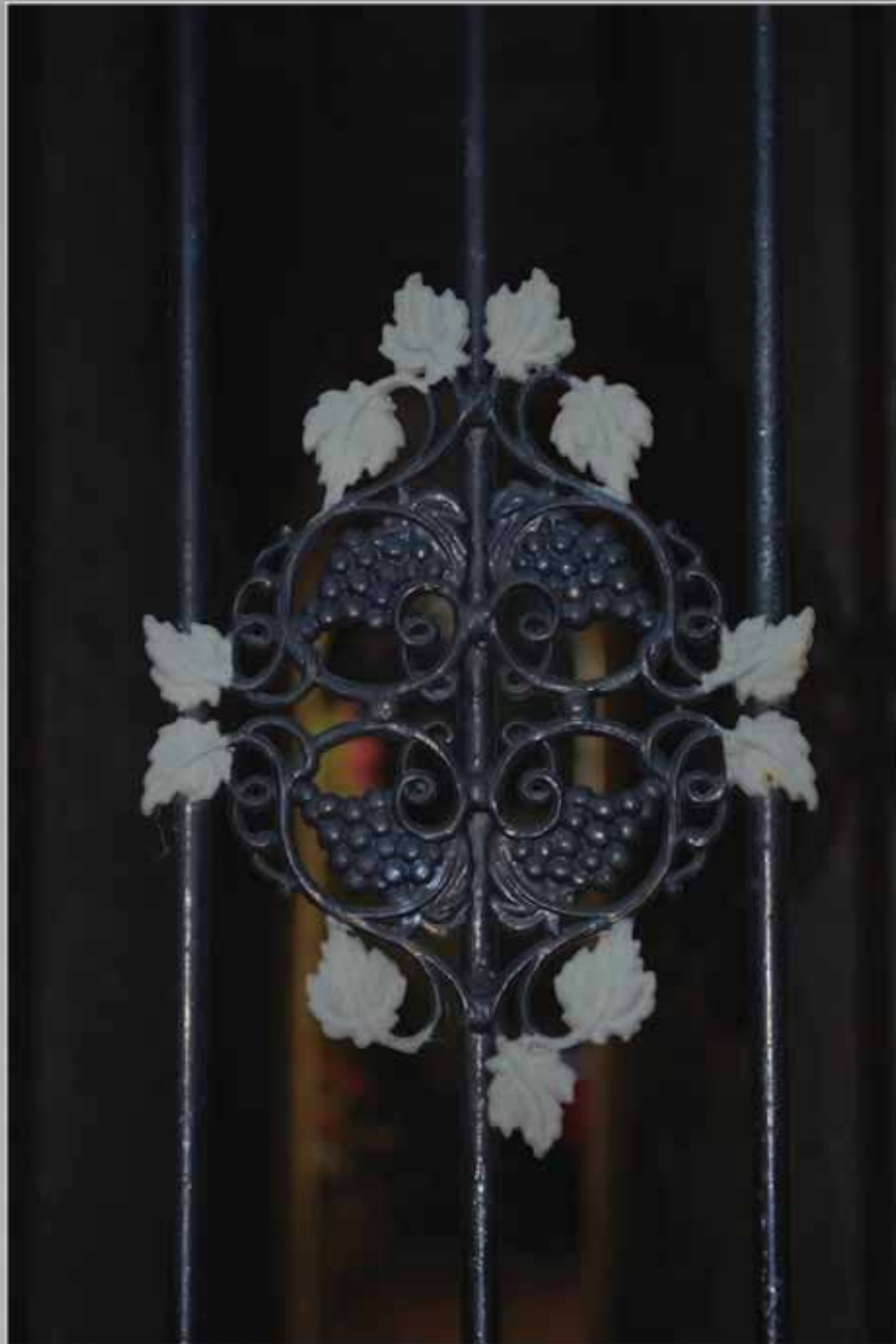
Don Dement- $\frac{1}{320}$ sec at $f / 8.0$ -ISO 1250- 200 mm

June 19, 2010



Sharon Stafford- $\frac{1}{25}$ sec at $f / 5.6$ -ISO 200- 68 mm

June 18, 2010



Melonie Collini- $\frac{1}{125}$ sec at $f / 4.0$ -ISO 100- 55 mm

June 19, 2010



Matt Korbelaak- $\frac{1}{60}$ sec at $f / 4.5$ -ISO 200- 26 mm

June 19, 2010



Sharon Stafford- $\frac{1}{30}$ sec at $f / 5.6$ -ISO 200- 68 mm

June 19, 2010



Chuck Stafford- $\frac{1}{125}$ sec at $f / 4.0$ -ISO 1600- 200 mm

June 19, 2010



Matt Korbelaak- $\frac{1}{125}$ sec at $f / 5.0$ -ISO 560- 65 mm

June 19, 2010



Chuck Stafford- $1/50$ sec at $f / 4.5$ -ISO 400- 106 mm

June 19, 2010



Sharon Stafford- $1/20$ sec at $f / 5.6$ -ISO 200- 28 mm

June 19, 2010



Matt Korbelaak- $\frac{1}{60}$ sec at $f / 4.8$ -ISO 220- 60 mm

June 19, 2010



Don Dement- $\frac{1}{100}$ sec at $f / 8.0$ -ISO 1250- 65 mm

June 18, 2010



Melonie Collini- $\frac{1}{125}$ sec at $f / 4.0$ -ISO 100- 55 mm

June 19, 2010



Matt Korbelak- $1/60$ sec at $f / 14$ -ISO 200- 18 mm

June 19, 2010



Chuck Stafford- $1/1250$ sec at $f / 4.5$ -ISO 400- 70 mm

June 19, 2010



Chuck Stafford- $1/2000$ sec at $f / 4.5$ -ISO 400- 81 mm

June 19, 2010



Matt Korbelak- $1/125$ sec at $f / 16$ -ISO 200- 31 mm

June 19, 2010



Matt Korbelak- $1/125$ sec at $f / 18$ -ISO 200- 26 mm

June 19, 2010



Don Dement- $1/500$ sec at $f / 8.0$ -ISO 250- 270 mm

June 19, 2010



Don Dement- $\frac{1}{160}$ sec at $f / 8.0$ -ISO 320- 91 mm

June 19, 2010



Chuck Stafford- $\frac{1}{400}$ sec at $f / 4.5$ -ISO 400- 70 mm

June 18, 2010



Melonie Collini- $\frac{1}{125}$ sec at $f / 5.6$ -ISO 200- 55 mm

June 19, 2010



Don Dement- $\frac{1}{40}$ sec at $f / 22$ -ISO 320- 25 mm

June 19, 2010



Don Dement- $\frac{1}{400}$ sec at $f / 8.0$ -ISO 320- 218 mm

June 19, 2010



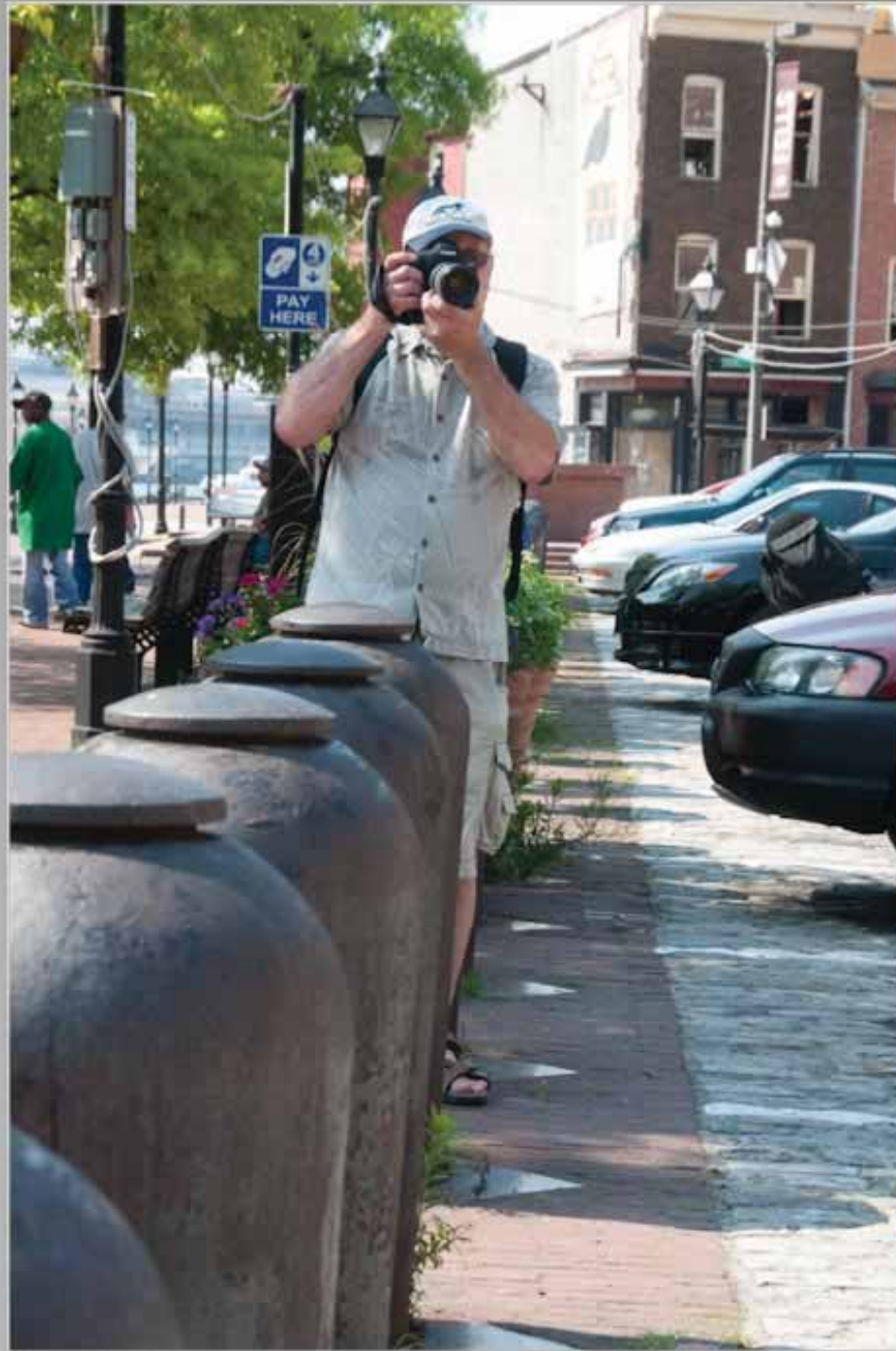
Don Dement- $1/640$ sec at $f / 8.0$ -ISO 200- 154 mm

June 18, 2010



Melonie Collini- $\frac{1}{125}$ sec at $f / 8.0$ -ISO 125- 62 mm

June 19, 2010



Matt Korbelak- $1/80$ sec at $f / 14$ -ISO 200- 75 mm

June 19, 2010



Chuck Stafford- $\frac{1}{800}$ sec at $f / 4.5$ -ISO 400- 70 mm

June 19, 2010



Chuck Stafford- $1/1250$ sec at $f / 4.5$ -ISO 400- 70 mm

June 19, 2010



Matt Korbelak- $1/80$ sec at $f / 14$ -ISO 200- 32 mm

June 19, 2010



Don Dement- $1/400$ sec at $f / 22$ -ISO 1250- 270 mm

June 19, 2010



Don Dement- $1/250$ sec at $f / 22$ -ISO 1250- 184 mm

June 19, 2010



Matt Korbela- $1/200$ sec at $f / 13$ -ISO 200- 135 mm

June 19, 2010



Matt Korbelaak- $1/80$ sec at $f / 10$ -ISO 200- 120 mm

June 19, 2010



Don Dement- $1/400$ sec at $f / 8.0$ -ISO 640- 270 mm

June 19, 2010



Don Dement- $\frac{1}{640}$ sec at $f / 8.0$ -ISO 200- 84 mm

June 18, 2010



Melonie Collini- $\frac{1}{125}$ sec at $f / 5.6$ -ISO 180- 55 mm

June 19, 2010



Sharon Stafford- $1/400$ sec at $f / 5.6$ -ISO 200- 53 mm

June 19, 2010



Don Dement- $\frac{1}{160}$ sec at $f / 8.0$ -ISO 200- 23 mm

June 19, 2010



Matt Korbelak- $1/80$ sec at $f / 13$ -ISO 200- 18 mm

June 19, 2010



Don Dement- $\frac{1}{400}$ sec at $f / 8.0$ -ISO 200- 42 mm

June 19, 2010



Matt Korbelak- $1/80$ sec at $f / 22$ -ISO 200- 18 mm

June 18, 2010



Melonie Collini- $1/500$ sec at $f / 5.6$ -ISO 200- 185 mm

June 19, 2010



Don Dement- $\frac{1}{25}$ sec at $f / 8.0$ -ISO 400- 109 mm

June 18, 2010



Melonie Collini- $\frac{1}{200}$ sec at $f / 10$ -ISO 200- 165 mm

June 18, 2010



Melonie Collini- $\frac{1}{60}$ sec at $f / 4.0$ -ISO 200- 55 mm

June 19, 2010



Chuck Stafford- $1/4000$ sec at $f / 4.0$ -ISO 400- 70 mm

June 19, 2010



Sharon Stafford- $1/500$ sec at $f / 5.6$ -ISO 200- 17 mm

June 19, 2010



Chuck Stafford- $1/2500$ sec at $f / 4.0$ -ISO 400- 16 mm

June 19, 2010



Don Dement- $\frac{1}{125}$ sec at $f / 8.0$ -ISO 200- 91 mm

June 19, 2010



Don Dement- $1/250$ sec at $f / 8.0$ -ISO 250- 154 mm

June 19, 2010



Matt Korbelak- $1/125$ sec at $f / 14$ -ISO 200- 44 mm

June 19, 2010



Matt Korbelak- $1/320$ sec at $f / 10$ -ISO 200- 34 mm

June 19, 2010



Matt Korbelak- $\frac{1}{60}$ sec at $f / 22$ -ISO 220- 46 mm

June 18, 2010



Melonie Collini- $1/250$ sec at $f / 8.0$ -ISO 100- 112 mm

June 18, 2010



Melonie Collini- $\frac{1}{250}$ sec at $f / 8.0$ -ISO 100- 112 mm

June 19, 2010



Don Dement- $\frac{1}{640}$ sec at $f / 8.0$ -ISO 200- 91 mm

June 19, 2010



Sharon Stafford- $1/1600$ sec at $f / 5.6$ -ISO 200- 70 mm

June 19, 2010



Matt Korbelaak- $1/640$ sec at $f / 7.1$ -ISO 200- 29 mm

June 19, 2010



Matt Korbelak- $1/200$ sec at $f / 13$ -ISO 200- 52 mm

June 19, 2010



Chuck Stafford- $\frac{1}{640}$ sec at $f / 8.0$ -ISO 400- 35 mm

June 19, 2010



Chuck Stafford- $1/1000$ sec at $f / 8.0$ -ISO 400- 35 mm

June 19, 2010



Don Dement- $\frac{1}{400}$ sec at $f / 8.0$ -ISO 200- 91 mm

June 19, 2010



Chuck Stafford- $\frac{1}{40}$ sec at $f / 2.8$ -ISO 1600- 28 mm

June 19, 2010



Matt Korbelak- $\frac{1}{125}$ sec at $f / 10$ -ISO 200- 200 mm

June 19, 2010



Sharon Stafford- $1/400$ sec at $f / 5.6$ -ISO 200- 85 mm

June 18, 2010



Melonie Collini- $\frac{1}{160}$ sec at $f / 5.3$ -ISO 100- 155 mm

June 19, 2010



Matt Korbelak- $1/60$ sec at $f / 18$ -ISO 200- 26 mm

June 19, 2010



Chuck Stafford- $1/2000$ sec at $f / 3.5$ -ISO 400- 29 mm

June 19, 2010



Matt Korbelak- $1/80$ sec at $f / 20$ -ISO 200- 24 mm

June 19, 2010



Don Dement- $1/250$ sec at $f / 8.0$ -ISO 200- 42 mm

June 19, 2010



Don Dement- $\frac{1}{250}$ sec at $f / 8.0$ -ISO 200- 84 mm

June 19, 2010



Don Dement- $\frac{1}{400}$ sec at $f / 8.0$ -ISO 200- 35 mm

June 19, 2010



Sharon Stafford- $1/1000$ sec at $f / 5.6$ -ISO 200- 28 mm

June 19, 2010



Matt Korbelak- $1/400$ sec at $f / 10$ -ISO 200- 32 mm

June 18, 2010



Melonie Collini- $\frac{1}{125}$ sec at $f / 8.0$ -ISO 100- 55 mm

June 19, 2010



Matt Korbelak- $1/100$ sec at $f / 11$ -ISO 200- 55 mm

June 19, 2010



Chuck Stafford- $\frac{1}{1000}$ sec at $f / 8.0$ -ISO 400- 200 mm

June 19, 2010



Sharon Stafford- $1/320$ sec at $f / 5.6$ -ISO 200- 30 mm

June 19, 2010



Matt Korbelak- $\frac{1}{60}$ sec at $f / 11$ -ISO 200- 44 mm

June 19, 2010



Don Dement- $\frac{1}{320}$ sec at $f / 8.0$ -ISO 320- 168 mm

June 18, 2010



Melonie Collini- $\frac{1}{320}$ sec at $f / 4.5$ -ISO 200- 70 mm

June 19, 2010



Chuck Stafford- $\frac{1}{500}$ sec at $f / 8.0$ -ISO 400- 75 mm

June 19, 2010



Don Dement- $1/125$ sec at $f / 22$ -ISO 3200- 184 mm

June 18, 2010



Melonie Collini- $1/160$ sec at $f / 4.8$ -ISO 200- 100 mm

June 19, 2010



Matt Korbelak- $1/60$ sec at $f / 18$ -ISO 280- 70 mm

June 18, 2010



Melonie Collini- $\frac{1}{80}$ sec at $f / 4.8$ -ISO 400- 105 mm

June 19, 2010



Chuck Stafford- $1/1250$ sec at $f / 8.0$ -ISO 400- 200 mm

June 19, 2010



Chuck Stafford- $\frac{1}{320}$ sec at $f / 8.0$ -ISO 400- 70 mm

June 19, 2010



Don Dement- $\frac{1}{1000}$ sec at $f / 8.0$ -ISO 200- 270 mm

June 18, 2010



Melonie Collini- $1/800$ sec at $f / 5.6$ -ISO 200- 200 mm

June 19, 2010



Chuck Stafford- $\frac{1}{1250}$ sec at $f / 8.0$ -ISO 400- 200 mm

June 19, 2010



Sharon Stafford- $1/400$ sec at $f / 5.6$ -ISO 200- 59 mm

June 19, 2010



Chuck Stafford- $\frac{1}{250}$ sec at $f / 8.0$ -ISO 400- 78 mm

June 18, 2010



Melonie Collini- $1/60$ sec at $f / 8.0$ -ISO 200- 55 mm

June 19, 2010



Matt Korbela- $\frac{1}{125}$ sec at $f / 9.0$ -ISO 200- 29 mm

June 19, 2010



Matt Korbelaak- $\frac{1}{125}$ sec at $f / 5.6$ -ISO 200- 52 mm

June 19, 2010



Matt Korbelak- $1/200$ sec at $f / 14$ -ISO 200- 70 mm

June 19, 2010



Don Dement- $\frac{1}{1600}$ sec at $f / 8.0$ -ISO 200- 109 mm

June 19, 2010



Chuck Stafford- $\frac{1}{800}$ sec at $f / 6.3$ -ISO 400- 29 mm

June 19, 2010



Don Dement- $\frac{1}{60}$ sec at $f / 8.0$ -ISO 1000- 35 mm

June 19, 2010



Chuck Stafford- $1/250$ sec at $f / 6.3$ -ISO 400- 16 mm

June 19, 2010



Chuck Stafford- $1/80$ sec at $f / 4.0$ -ISO 400- 35 mm