

Matt Korbelak; ISO 220; 1/50 sec at f / 9.0



Chris Holme;;



© 2012 Chris Holme

Jim Luke;;



Jay Alden; ISO 200; $1/500$ sec at $f / 9.0$



Jim Luke;;



Judith Alden; ISO 200; 1/50 sec at f / 4.0



Kim Kelly; ISO 100; 1/3 sec at f / 8.0

★★★★★



Chris Holme;;



© 2012 Chris Holme

Chris Holme;;



© 2012 Chris Holme

Judith Alden; ISO 200; 1/50 sec at f / 3.5



Judith Alden; ISO 80; $1/100$ sec at $f / 3.5$



Matt Korbelak; ISO 250; 1/3 sec at f / 8.0



Matt Korbelak; ISO 360; 1/40 sec at f / 4.0



Chris Holme;;



© 2012 Chris Holme

Chris Holme;;



© 2012 Chris Holme

Jay Alden; ISO 800; $1/250$ sec at $f / 8.0$



Matt Korbelak; ISO 450; 1/30 sec at $f / 8.0$



Matt Korbelak; ISO 2200; 1/80 sec at f / 8.0



Kim Kelly; ISO 100; 1/3 sec at f / 6.3

★★★★



Matt Korbelak; ISO 250; 1/80 sec at $f / 3.8$



Chris Holme;;



© 2012 Chris Holme

Chris Holme;;



© 2012 Chris Holme

Chris Holme;;

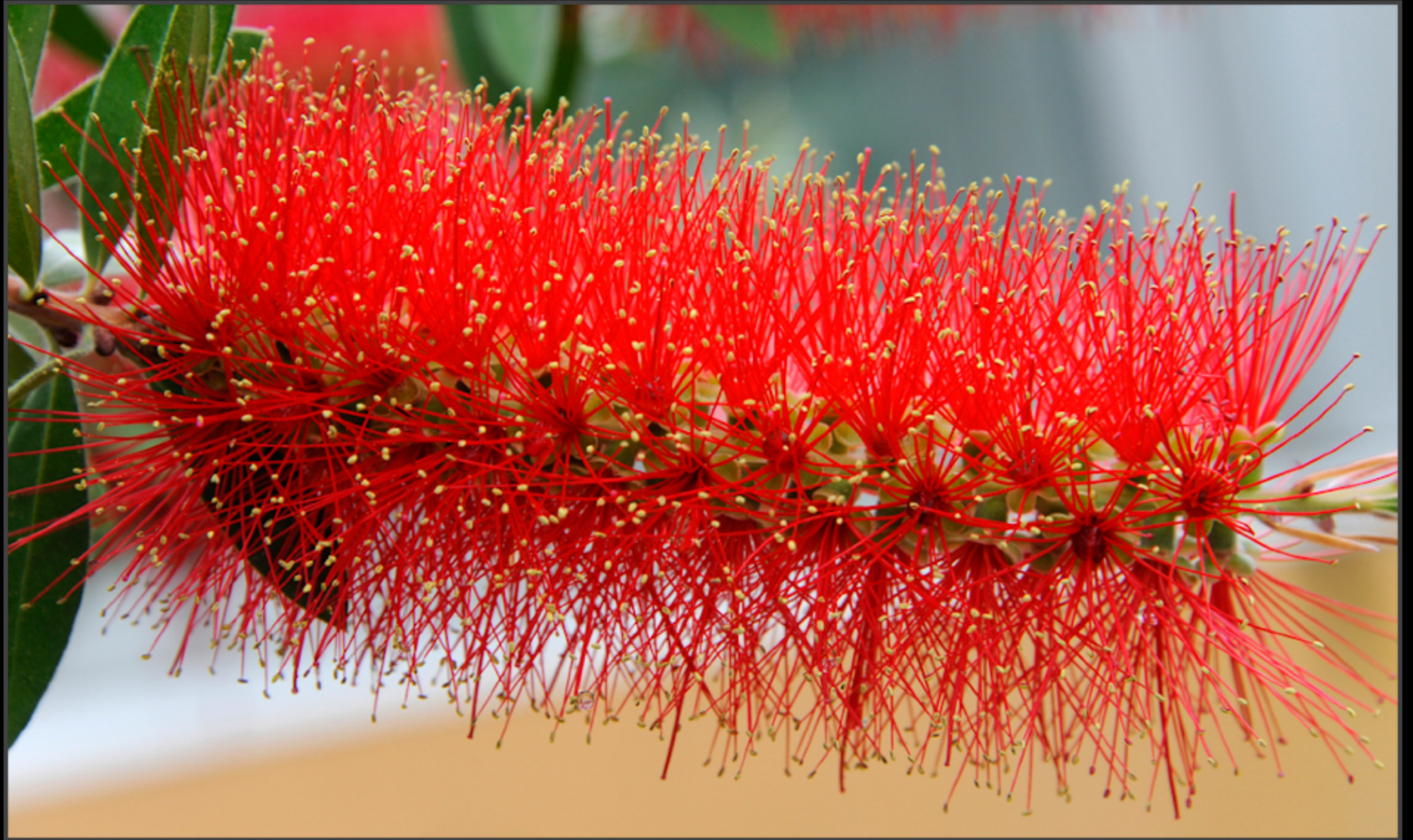


© 2012 Chris Holme

Matt Korbelak; ISO 200; 1/40 sec at f / 4.0



Jay Alden; ISO 800; $\frac{1}{320}$ sec at $f / 9.0$



Chris Holme;;



© 2012 Chris Holme

Chris Holme;;



© 2012 Chris Holme

Matt Korbelak; ISO 1400; 1/60 sec at f / 9.0



Jim Luke;;



Matt Korbelak; ISO 800; $\frac{1}{80}$ sec at $f / 6.3$



Matt Korbelak; ISO 400; 1/40 sec at $f / 6.3$



June Doezema; ISO 800; $\frac{1}{125}$ sec at $f / 6.3$



Matt Korbelak; ISO 720; 1/30 sec at f / 5.6



Matt Korbela; ISO 800; 1/30 sec at f / 5.6



Kim Kelly; ISO 100; 0.8 sec at $f / 18$



Jay Alden; ISO 800; $\frac{1}{320}$ sec at $f / 9.0$



Kim Kelly; ISO 100; 0.8 sec at f / 29

★★★★★



Kim Kelly; ISO 100; 0.8 sec at $f / 9.0$

★★★★★



Matt Korbelak; ISO 1100; 1/40 sec at f / 5.6



Jay Alden; ISO 800; $1/500$ sec at $f / 11$



Kim Kelly; ISO 100; 0.8 sec at f / 25

★★★★★



Chris Holme;;



© 2012 Chris Holme

Chris Holme;;



© 2012 Chris Holme

Judith Alden; ISO 80; 1/80 sec at f / 4.0



Chris Holme;;



© 2012 Chris Holme

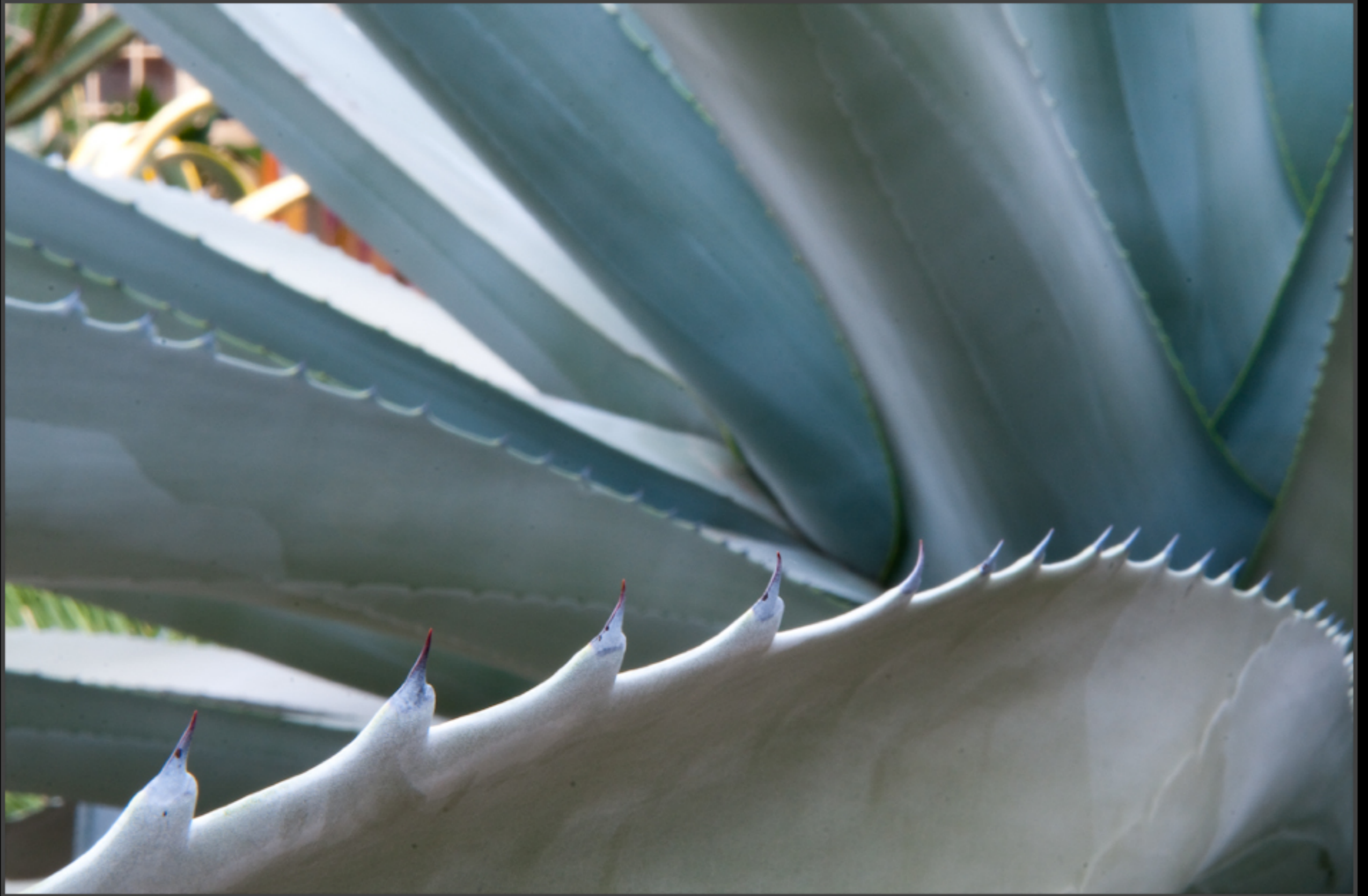
June Doezema; ISO 1600; $\frac{1}{125}$ sec at $f / 6.3$



Matt Korbelak; ISO 280; 1.3 sec at $f / 25$



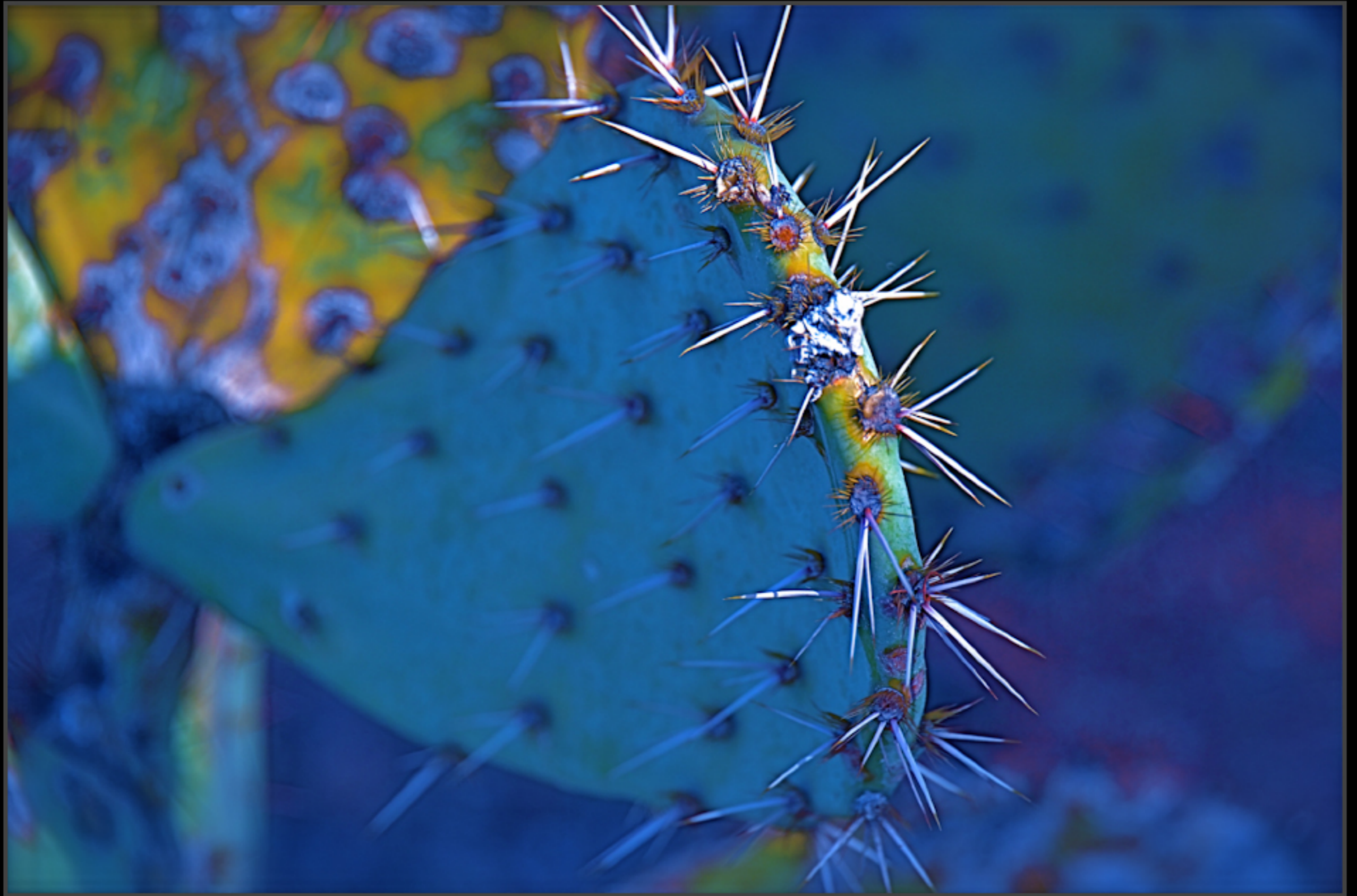
Matt Korbelak; ISO 280; 2.0 sec at $f / 32$



Judith Alden; ISO 80; $\frac{1}{320}$ sec at $f / 4.0$



June Doezema; ISO 100; $\frac{1}{160}$ sec at $f / 6.3$



June Doezenia; ISO 560; $\frac{1}{60}$ sec at $f / 6.3$



Jim Luke;;



June Doezema; ISO 2000; $\frac{1}{125}$ sec at $f / 6.3$



June Doezema; ISO 1250; $\frac{1}{125}$ sec at $f / 6.3$



Jim Luke;;



Matt Korbelak; ISO 1000; 1/60 sec at f / 8.0



Matt Korbelak; ISO 800; 1/60 sec at f / 8.0

