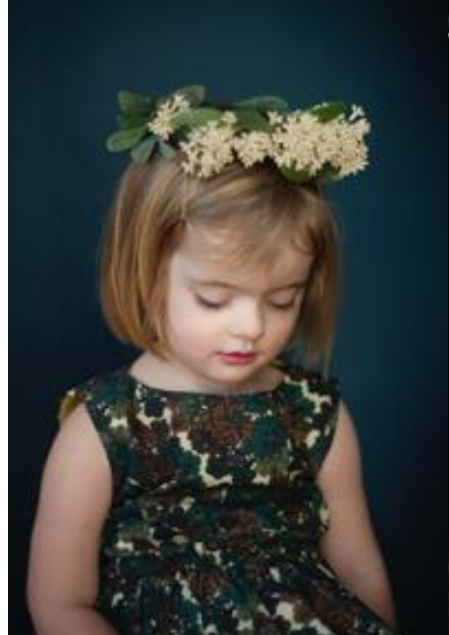
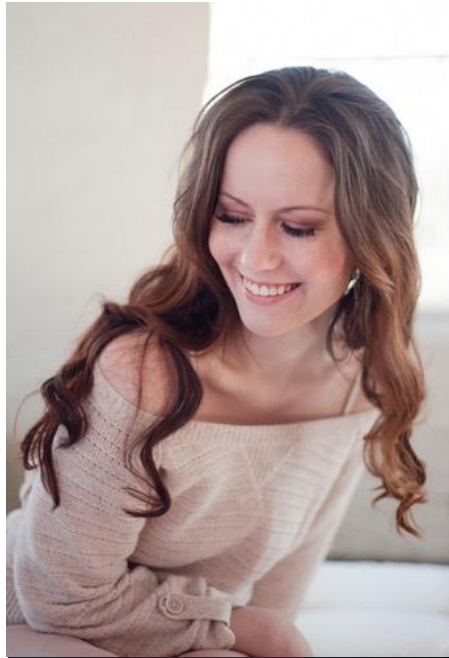


# JOANNA TILLMAN

PORTRAIT & EDITORIAL PHOTOGRAPHY



# **How to Take a Flattering Portrait of Anyone**

“Why do I always look  
bad?”

# Angles

**SHOOT SUCCESS:**

Comfort is key

**SHOOT SUCCESS:**

Comfort is key

Pep talk - *it's my job to make you  
look good!*

**SHOOT SUCCESS:**

Comfort is key

**TIME**

# **POSING: basic tips + tricks**

BE INSPIRED



# POSING: basic tips + tricks

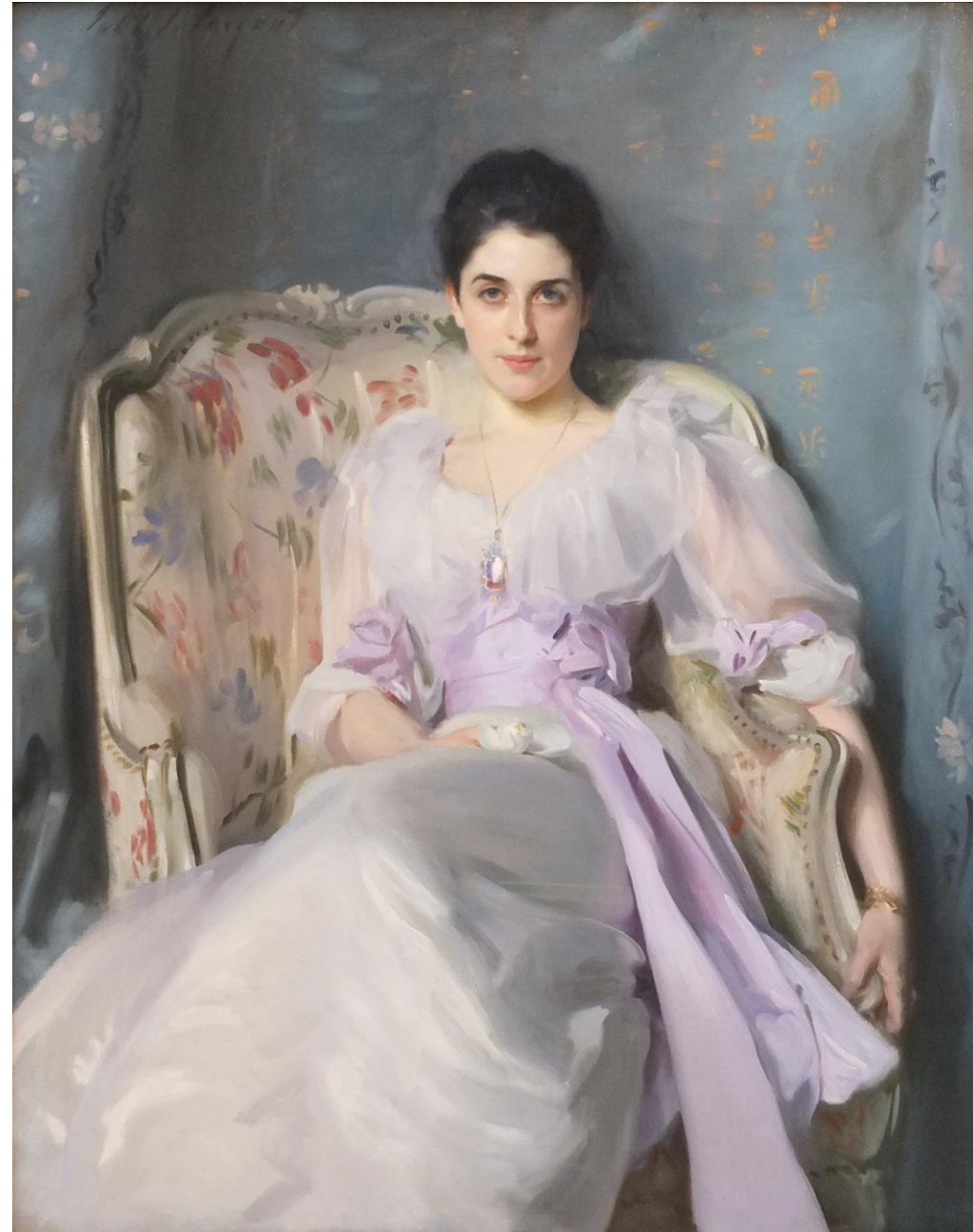
BE INSPIRED



Julia Margaret Cameron

# POSING: basic tips + tricks

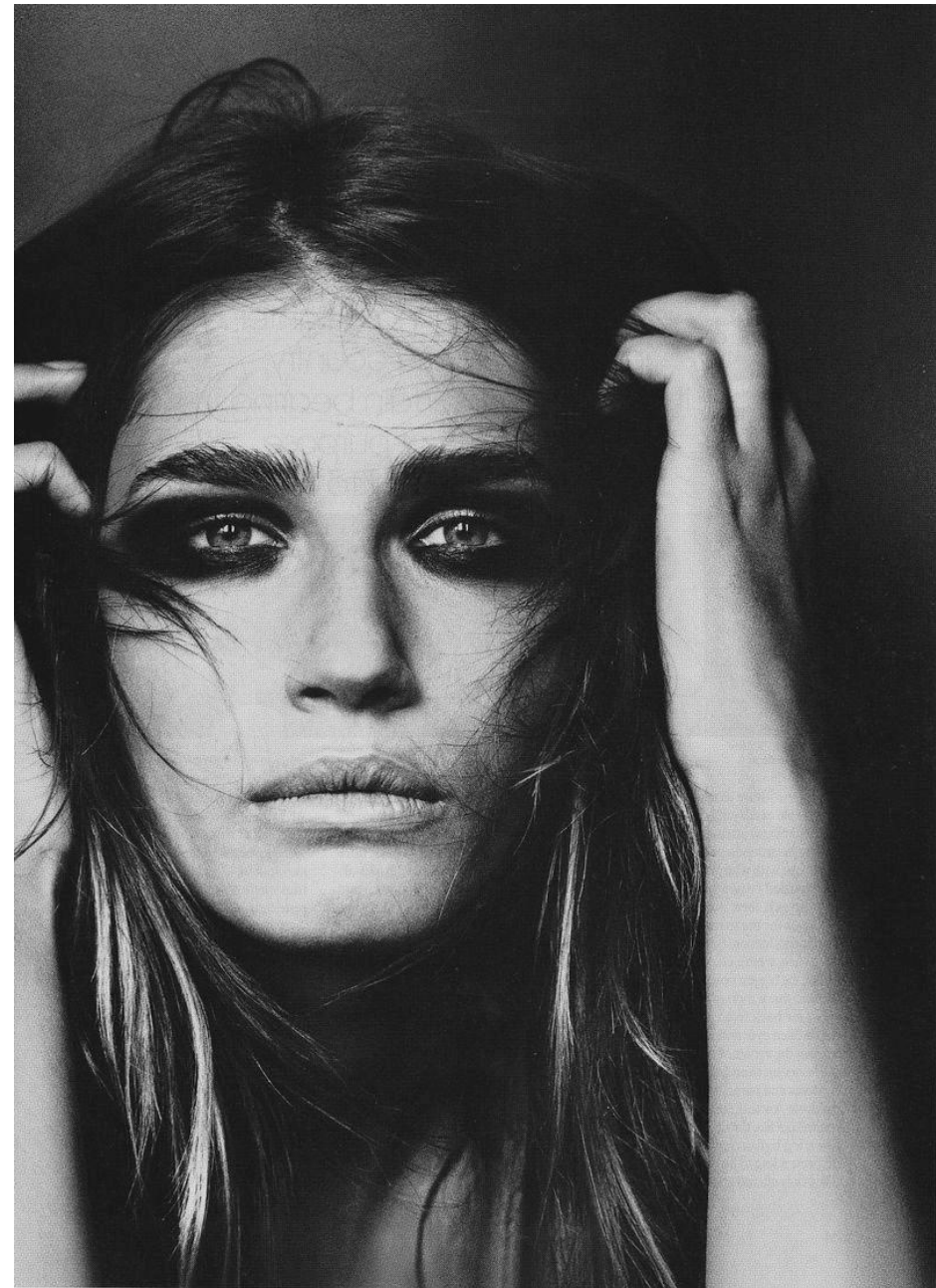
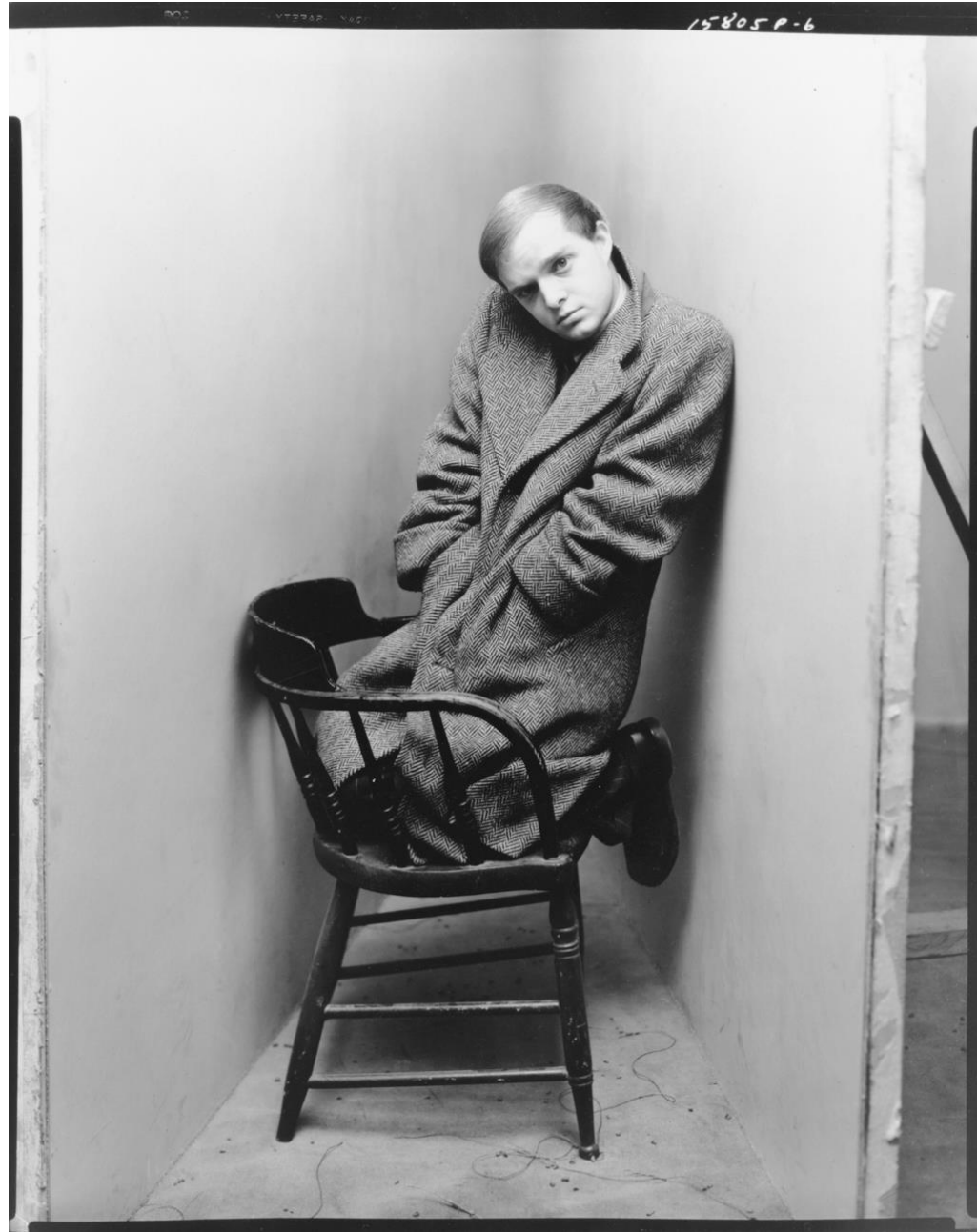
BE INSPIRED



John Singer Sargent

# POSING: basic tips + tricks

BE INSPIRED



Irving Penn



# POSING: basic tips + tricks

BE INSPIRED



Annie Leibovitz

# **POSING: Basic tips + tricks**

CHIN / JAW LINE



# POSING: Basic tips + tricks

CHIN / JAW LINE



# POSING: Basic tips + tricks

CHIN / JAW LINE



# POSING: Basic tips + tricks

CHIN / JAW LINE





# **POSING: Basic tips + tricks**

## WOMEN

# POSING: Basic tips + tricks

SHOULDERS - ASYMMETRY - HANDS





# POSING: Basic tips + tricks

SHOULDERS - ASYMMETRY - HANDS



# **POSING: basic tips + tricks**

Men

# POSING: basic tips + tricks

SHOULDERS - ASYMMETRY - HANDS





# POSING: basic tips + tricks

SHOULDERS - ASYMMETRY - HANDS



# POSING: basic tips + tricks



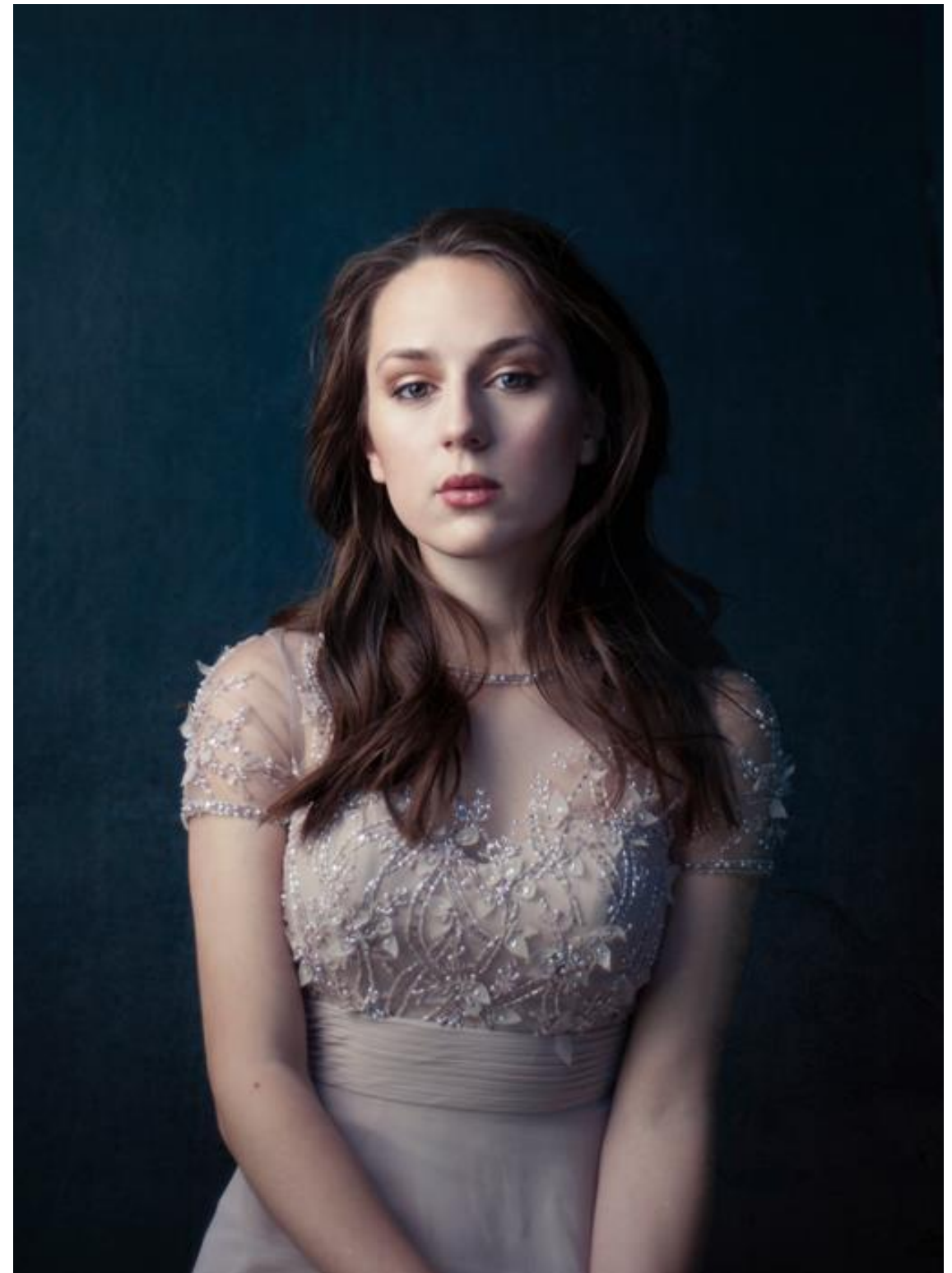
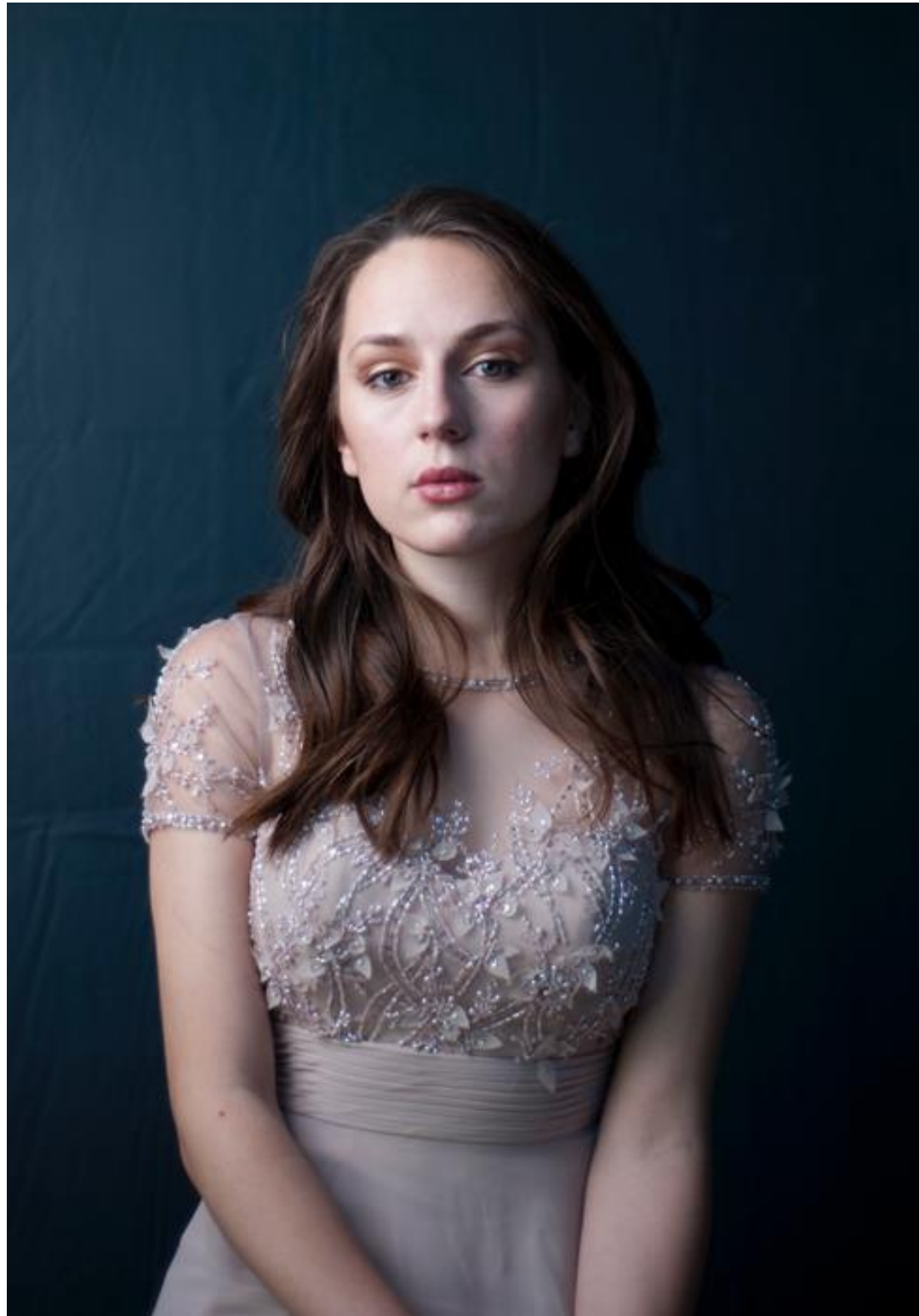
**RETOUCHING**



**RETOUCHING**

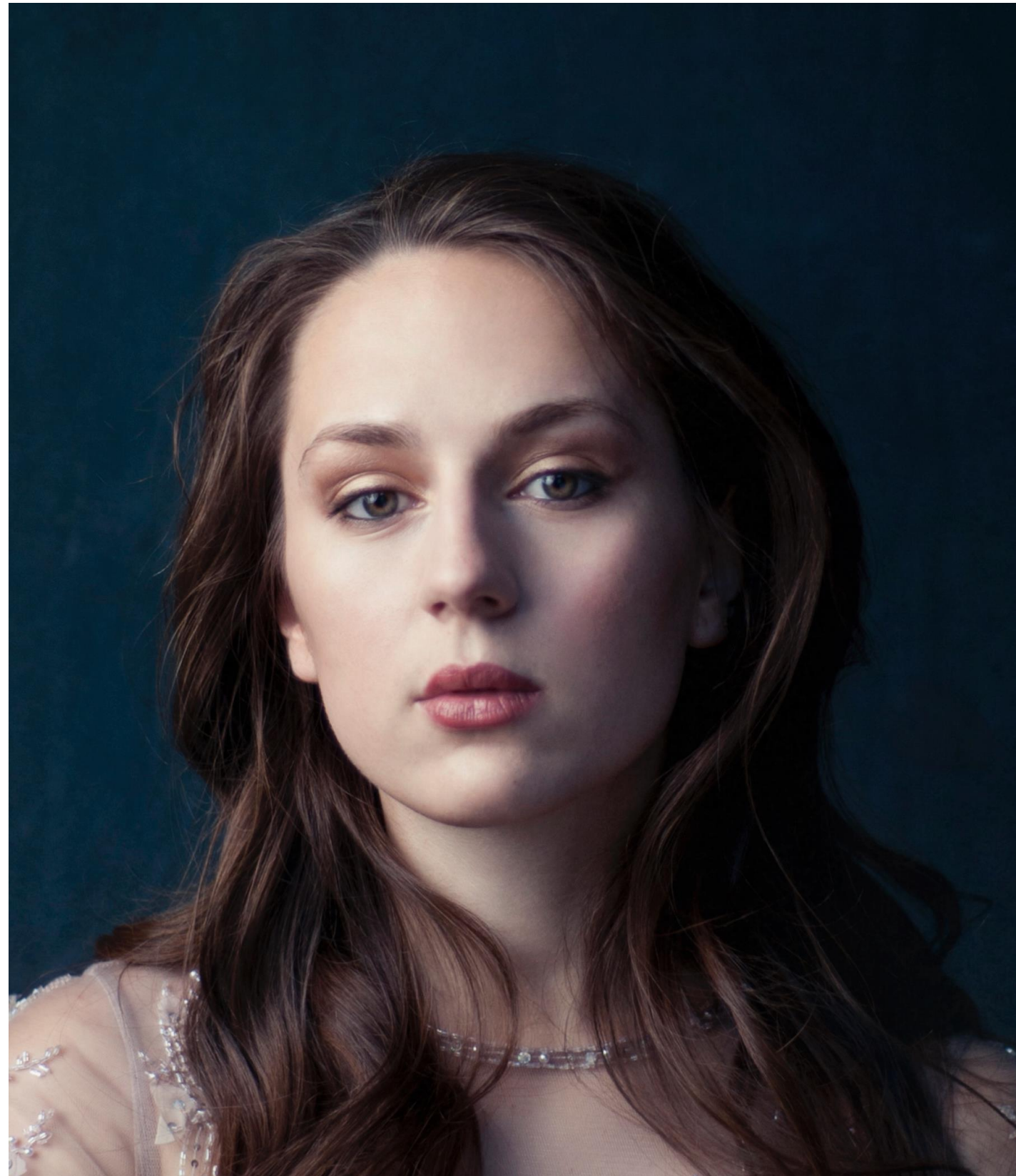
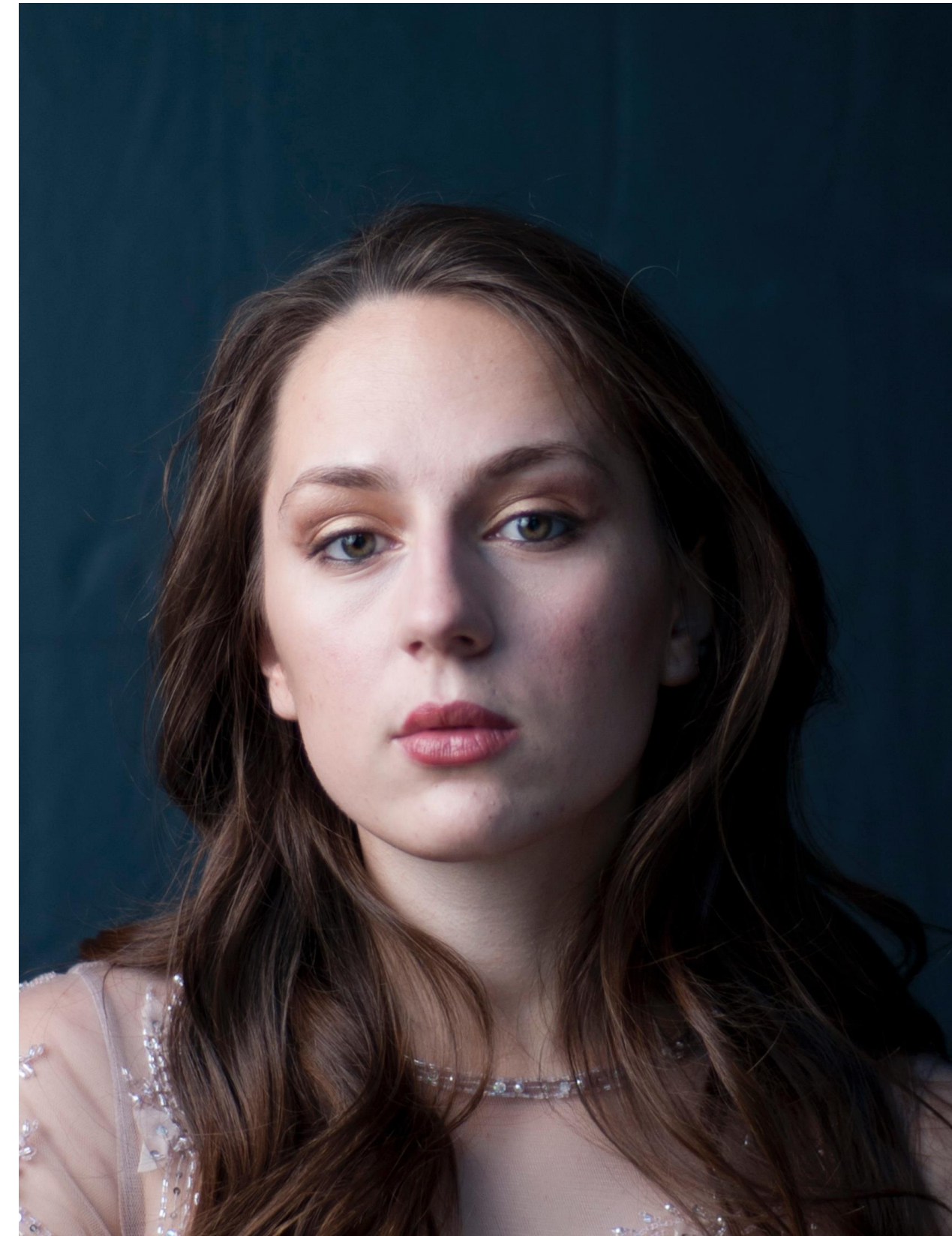
Philosophy

# RETOUCHING





# RETOUCHING





# RETOUCHING



# BACKGROUNDS





# BACKGROUNDS



# BACKGROUNDS





# BACKGROUNDS





# LIGHTING EQUIPMENT



**AlienBee 400**

**AlienBee 800**



**Photek Softlighter**

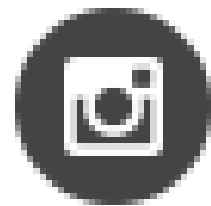


**Octabox**

# KEEP IN TOUCH

- > Portraits
- > Photoshop tutoring
- > Collaborations

[www.joannatillman.com](http://www.joannatillman.com)  
[studio@joannatillman.com](mailto:studio@joannatillman.com)



@joanna\_tillman



JoannaTillmanPortrait